



User Manual

Wireless Keyboard and Mouse Combo

DK05 Combo

Getting Started Guide

Package Contents

1 x Keyboard
1 x Mouse
1 x Silicone Keyboard Cover
1 x USB Receiver (pre-stored in mouse compartment)
1 x USB-C Charging Cable
1 x User Manual

Specifications

Connectivity	2.4G+Bluetooth 1+Bluetooth 2
Connected Devices	Up to 3
Layout Compatibility	Windows/Mac
Battery	280mAh capacity
Charging Time	2 hours (USB-C charge)
Continuous Usage Time	Up to 6 months (based on 2 hours/day)
Sleep Time	2 hours
Front Side of Keyboard	ABS
Back Side of Keyboard	Metal
Key Type	Laptop-style scissor switches
Frequency Band	2402MHz - 2480MHz
Maximum Transmission Power	0 dBm

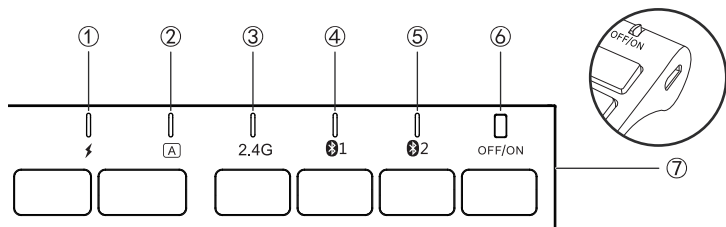
System Requirements

- Windows 10, 11, or later with Bluetooth HID Profile (PC/laptop/tablet)
- macOS 10.15 or later (Mac/iMac)
- iPadOS 14 or later (iPad)
- Android 8.0 or later (smartphone/tablet)

NOTE: This keyboard is not fully compatible with Bluetooth adapters, Mac mini, Samsung Smart TVs, or Nokia phones.

- 1 -

Product Overview



Charging Indicator (①)

Red light: Charging in progress.

Green light: Fully charged (approximately 2 hours).

Caps Lock Indicator (②)

Press the "Caps Lock" key to toggle between uppercase and lowercase.

Blue light: Caps Lock is active (uppercase).

2.4G Channel Indicator (③)

Press "fn" + "Q" to 2.4G Mode, and the indicator will turn green for 3s.

Bluetooth Channel Indicator (④⑤)

Hold and press "fn" + W/E for 3 seconds to Bluetooth 1/2 pairing mode, and

the indicator will keep flashing blue for 180s.

Power & Low Battery Indicator (③④⑤)

③④⑤ light up for 3 seconds when the keyboard powers on

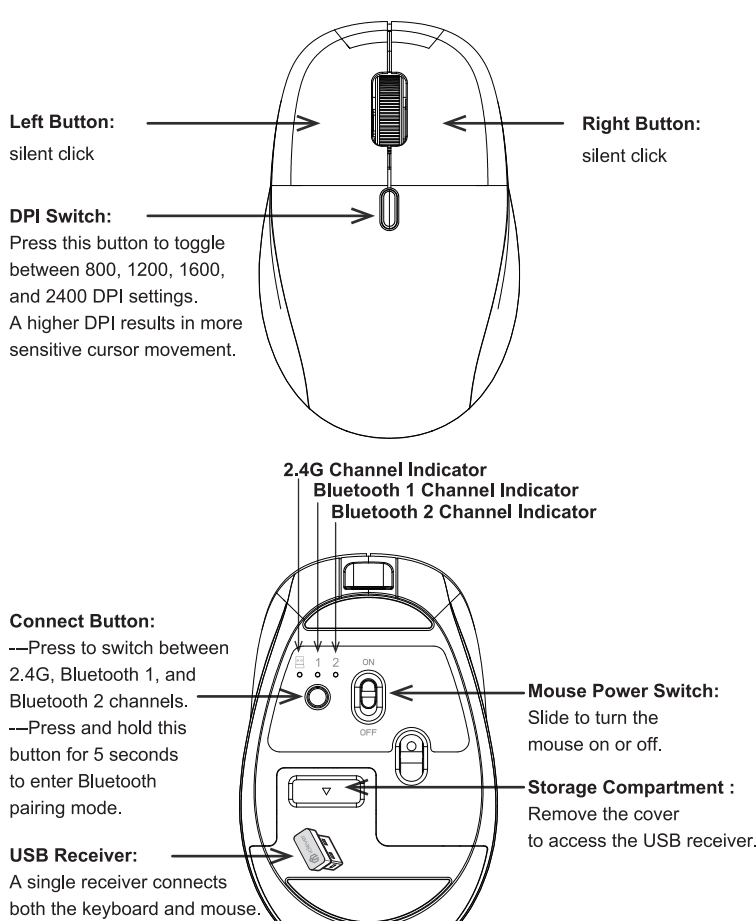
When the battery level drops below 5%, the ③④⑤ indicator will keep

flashing.

Power Switch (⑥): Slide to ON to turn on, and to OFF to turn off.

Charging Port (⑦): For charging the device.

- 2 -



- 3 -

Pairing Instruction

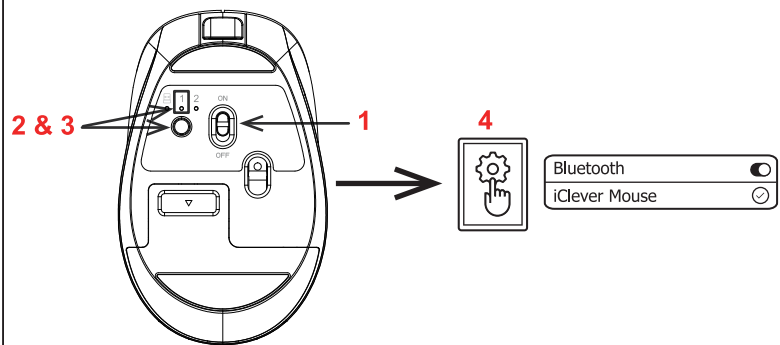
A. Pairing the Device via Bluetooth:

Step 1: Pair the Keyboard

1. Turn the keyboard power buttons on the keyboard to "ON"
2. Press "fn" + "W" or "E" to select **Bluetooth channel 1** or 2 (each channel can pair with one device).
3. Press and hold "fn" + "W" or "E" for 5 seconds to enter pairing mode. The indicator for the selected Bluetooth channel will flash rapidly for 180 seconds.
4. In your device's Bluetooth settings, select "**iClever DK05 KB**" from the device list. Once connected, the Bluetooth channel indicator will turn off.

Step 2: Pair the Mouse

1. Turn the mouse power buttons on the mouse to "ON"
2. Press **Connect** button to select **Bluetooth channel 1** or 2.
3. Press and hold **Connctet** button for 5 seconds to enter pairing mode. The indicator for the selected Bluetooth channel will flash rapidly for 180 seconds.
4. In your device's Bluetooth settings, select "**iClever Mouse**" from the device list. Once connected, the Bluetooth channel indicator will turn off.



- 4 -

Finding the Pairing Name on Different Systems

► For Windows 10 (PC/laptop):

Select the Windows icon > Select **Settings** > **Devices** > Bluetooth & other devices > **Add Bluetooth or other device** > **Bluetooth** > select the device you want to connect to and select **Pair**.

► For macOS (Mac):

Open **System Preferences** > select **Bluetooth** > select the device you

want to connect to from the Devices list and click **Pair**.

► iOS/Android (iPhone/smartphone):

Go to **Settings** > select **Bluetooth** > Tap on the device you want to connect to from the **Other Devices** list.

B. Pairing the Device via 2.4GHz Wireless (USB Receiver):

Step 1: Power On the Keyboard and Mouse.

Turn the power buttons on the keyboard and mouse to "ON"

Step 2: Connect the USB Receiver

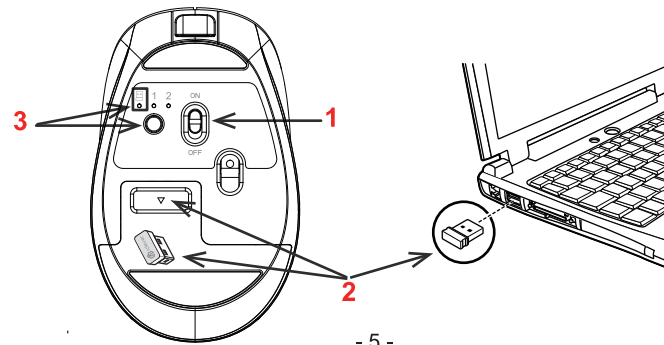
Remove the USB receiver from the storage compartment of the mouse.

Plug the USB receiver into a USB port on your computer.

Step 3: Switch to 2.4G Mode

For the Keyboard: Press "fn" + "Q" to select the 2.4G channel.

For the Mouse: Press the **Connect** button to select the 2.4G channel.



- 5 -

C. Switch connection between multiple devices previously connected

For the keyboard: Press "fn" + **Q**/W/E to switch between connected devices.

For the mouse: Press "connctet" button to switch between connected devices.

D. Re-pairing the previous connection channel.

Press and hold "fn" + **W**/E for 5 seconds to re-pair.

For thre mouse: Press the **Connect** button to select Bluetooth channel 1 or 2.

Then, press and hold the button for 5 seconds to re-pair.

Notes:

► Auto Reconnect Function: The keyboard automatically connects to the last-used device.

► Connection Warning: Avoid using a Bluetooth adapter to connect the keyboard.

► Connection Issues: If you encounter connection problems, please consult the FAQ or contact the iClever support team.

Charge the Devices

Output: DC 5V/200mA;

NOTE: USB charger is not included in the package.

If the charger's voltage exceeds 7V, the keyboard will stop charging.

English: The power supplied by the charger must be between a minimum of 1 watt

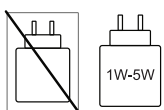
and a maximum of 5 watts to achieve the maximum charging speed.

Deutsch: Die vom Ladegerät gelieferte Leistung muss zwischen minimal 1 Watt und

maximal 5 Watt liegen, um die maximale Ladegeschwindigkeit zu erreichen.

Franglais: La puissance fournie par le chargeur doit être comprise entre un minimum

de 1 watt et un maximum de 5 watts pour atteindre la vitesse de charge maximale.



- 6 -

Keys and Functions

The table below describes special key combinations for different operating systems.

Key/ Function	Mac	iOS	Android	Windows 10	Windows
Way to use	Direct access	Direct access	Direct access	Press fn +	Direct access
F1	Brightness -	Brightness -	Brightness -	Brightness -	F1
F2	Brightness +	Brightness +	Brightness +	Brightness +	F2
F3	Mission Control	Home	Home	Web browser	F3
F4	Switch apps	N/A	N/A	Switch apps	F4
F5	Search	Search	N/A	Search in browser	F5
F6	Previous track	Previous track	Previous track	Previous track	F6
F7	Play/pause	Play/pause	Play/pause	Play/pause	F7
F8	Next track	Next track	Next track	Next track	F8
F9	Mute	Mute	Mute	Mute	F9
F10	Volume -	Volume -	Volume -	Volume -	F10
F11	Volume +	Volume +	Volume +	Volume +	F11
F12	Screenshot	Screenshot	Screenshot	Screenshot	F12

- 7 -

Special Key	Description
esc	Press "fn" + "esc" to toggle the Fn Lock function. By default, the keyboard provides access to the F-keys. To switch to direct access for media controls (e.g., Volume Up, Volume Down, Play/Pause), press "fn" + "esc" again.
fn	The "fn" key is used in combination with other keys to enable special functions and shortcuts.
Q	Press "fn" this key to switch to 2.4G mode.
W	Press "fn" and this key to switch to Bluetooth Channel 1. Press and hold "fn" and this key for 5 seconds to enter Bluetooth pairing mode.
E	Press "fn" and this key to switch to Bluetooth Channel 2. Press and hold "fn" and this key for 5 seconds to enter Bluetooth pairing mode.
win	Functions as the "Win" key on Windows and Android, and as the "Option" key on iOS and macOS.
alt	Functions as the "Alt" key on Windows and Android, and as the "Command" key on iOS and macOS.
ctrl	Functions as the "Ctrl" key on Windows and Android, and as the "Option" key on iOS and macOS.
numlk	Functions as the "Num Lock" key on Windows and Android, and as the "Clear" key on iOS and macOS. Note: This function is not supported on iOS.

- 8 -

FAQ

What should I do if my product is damaged or looks used?

Please take photos right away and contact customer service at support@iclever.com. We'll assist you with the return or exchange process.

Delay when typing or frequent disconnections

1. **Restart Bluetooth Device:** Restart the device you're connecting to.
2. **Reduce Distance:** Move the iClever keyboard closer to your computer.
3. **Minimize Interference:** Stay at least 8 inches away from potential interference sources, such as speakers, microwaves, cordless phones, baby monitors, garage door openers, WiFi routers, and computer power supplies.
4. **Direct Connection:** Ensure the product or USB receiver is connected directly to the computer and not to a hub, extender, or switch.
5. **Move Closer to USB Receiver:** For 2.4G connection issues, position the keyboard closer to the USB receiver to improve connectivity.
5. **Check for Background Updates:** Ensure no updates are running that could cause delays.
7. **Update Operating System:** Make sure your OS is up to date.
8. **Test on Another App/Device:** Try on a different app or computer.

The keyboard and mouse are not working

1. **Check Power:** Ensure the device is turned on. Slide the Off/On switch to the Off position, then back to On.
2. **Charge the Device:** Charge the device for at least 2 hours.
3. **Restart Your Device:** Restart your Bluetooth computer or tablet.
4. **Remove Connection Records:** For iPad, go to "Settings" > "Bluetooth" and delete all connection records under "MY DEVICES."
5. **Refresh Bluetooth:** Turn Bluetooth off and then on again. For iPad, in "Settings" > "Bluetooth," if the switch shows ON, tap it twice to refresh.
6. **Reconnect:** Re-establish the Bluetooth connection.

- 9 -

Can't charge or hold the charge

1. **Try a different USB port:** Use an alternate USB port for charging.
2. **Check Adapter Voltage:** Make sure the charger's voltage does not exceed 7V. If it does, the keyboard will stop charging.
3. **Check Charging Indicators:** The indicator light will turn red when charging and green when fully charged.
4. **Use Direct Connection:** Connect the charging cable directly to a USB port on your computer.

Bluetooth Keyboard Compatibility with Mac Devices

1. **Check Bluetooth Settings:** Make sure Bluetooth is enabled on your Mac. Go to System Preferences > Bluetooth and confirm your keyboard is connected.
2. **Restart Devices:** Restart both your Mac and the Bluetooth keyboard to refresh the connection.
3. **Remove Previous Connections:** If the keyboard appears in the Bluetooth settings but won't connect, remove it from the list.
4. **Update macOS:** Ensure your Mac is running the latest version of macOS. Check for updates under System Preferences > Software Update.
5. **Reset Bluetooth Module:** If the issue persists, reset the Bluetooth module on your Mac. Hold Shift + Option, click the Bluetooth icon in the menu bar, then select Debug > Remove all devices.

Contact

For any questions or support inquiries, please reach out to us at support@iclever.com

Social Media

You can reach out to us through our social media:

Facebook: @iClever
Twitter: @iClever_Tech
Instagram: @iclever_tech

- 10 -

FCC Statement

Changes or modifications not expressly approved by the party responsible for compliance could void the user's authority to operate the equipment. This equipment has been tested and found to comply with the limits for a Class B digital device, pursuant to Part 15 of the FCC Rules. These limits are designed to provide reasonable protection against harmful interference in a residential installation. This equipment generates uses and can radiate radio frequency energy and, if not installed and used in accordance with the instructions, may cause harmful interference to radio communications. However, there is no guarantee that interference will not occur in a particular installation. If this equipment does cause harmful interference to radio or television reception, which can be determined by turning the equipment off and on, the user is encouraged to try to correct the interference by one or more of the following measures:

----Reorient or relocate the receiving antenna.

----Increase the separation between the equipment and receiver.

----Connect the equipment into an outlet on a circuit different from that to which the receiver is connected.

----Consult the dealer or an experienced radio/TV technician for help.

This device complies with part 15 of the FCC rules. Operation is subject to the following two conditions (1) this device may not cause harmful interference, and (2) this device must accept any interference received, including interference that may cause undesired operation.

- 11 -